

THE LIVESTOCK COMFORT SPECIALIST

Agri-Comfort



PRODUCT CATALOG **2021**

STAY STRONG.

FARM-TESTED PRODUCTS
THAT REDEFINE THE
**NEXT LEVEL OF
COW COMFORT**

Economic incentives have encouraged producers to expand herd size; consequently there has been a gradual change from pasture-based operations to confinement-type housing systems. Advantages include improved access to feed and water, protection from environmental conditions, and improved hygiene and comfort. With this criteria in mind, our goal is to provide high quality farm solutions along with effective logistics and sales channels. We work hard to ensure that dairy producers worldwide have access to the best products to take your cows to the next level in cow comfort, hoof health and increased milk production.



THE LIVESTOCK COMFORT SPECIALIST



**DESIGNED FOR FARMERS,
BY FARMERS**

**FOCUS
ON**

5

***Improve cow comfort
with Focus on 5.***

Agri-Comfort seeks to increase cow productivity by centering on five key management components in modern dairy herd facilities. By having durable and reliable products with these attributes in mind, we aspire to partner in your success.



Why grow your business with Agri-Comfort?

Tough enough.

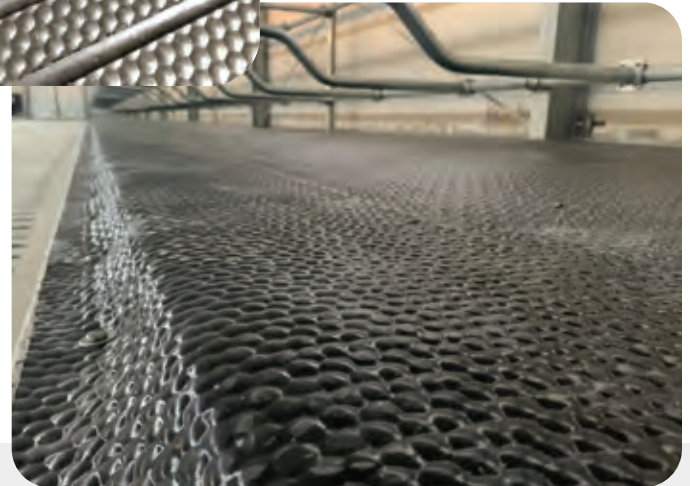
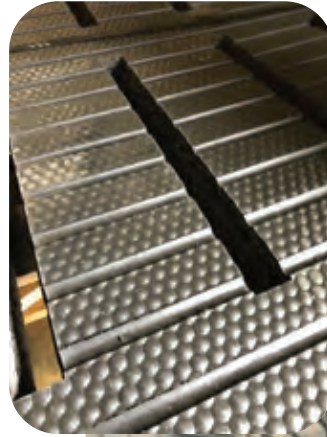
All Agri-Comfort products are engineered and pre-tested before we supply them to our customers. From the raw materials to the factory-backed warranties, we are adamant in our commitment to durability.

Cow friendly, farmer friendly.

From installation to daily maintenance, our products are designed for labor efficiency, durability and comfort. Your time is valuable, your herd health is an investment. It's our privilege at Agri-Comfort to partner in a mutual commitment to success!

"The majority of cows prefer to walk and stand on soft rubber than on concrete flooring."

- J. Dairy Science 2007



HYGIENE

The health of your herd is a key focus of Agri-Comfort. Using our products in a hygienic environment optimizes udder and hock health as well as their foot and leg condition in all areas of your operation.



MAINTENANCE

All Agri-Comfort products are designed to withstand the rigors of day-to-day, aggressive cleaning, bedding, and traffic in any type of manure system.



REST TIME

Your cows need their "Vitamin R". The importance of rest is paramount to the production and health of your herd. All of our Agri-Comfort products are engineered to optimize your cows time budget as it relates to feeding, grooming, milking and resting.



HOUSING

Rest and locomotion in a cow-friendly environment translates to cow longevity. All of our products work in conjunction with ventilation, lighting, and feed management.



STALLS

Optimizing rumination is the goal of Agri-Comfort's stall products. Stall comfort translates into better health and productivity as the cows rest is directly related to milk yield. Our variety of stall bed options can be matched to your preferred bedding material.

Contact Us:

Toll-Free: 1-888-231-3575
info@agri-comfort.com

USA HEAD OFFICE

701 East Elm Street, Sidney, NE 69162
Tel: 1-308-254-1137
Fax: 1-308-254-4527

NORTH EASTERN USA WAREHOUSE

3731 Luker Road, Cortland, NY 13045
Tel: 1-607-591-0103

CANADA HEAD OFFICE

7793 Young Street, Grassie, ON
Canada LOR 1M0
Tel: 1-905-945-3116
Fax: 1-905-945-5339

CANADA WAREHOUSE

1154 Parkinson Road
Woodstock ON, Canada N4S 7W3
Tel: 1-905-945-3116

Agri-Comfort is a
division of Agri-Plastics

Huber Technik Stall Mattress Systems

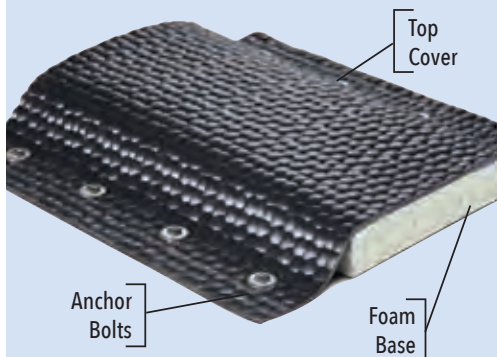


About Soft Bed 4GS and 8GS

Our highly advanced Huber Technik stall mattresses provide dairy cows with an ideal comfort surface to relax joints, enhance health and improve overall productivity. Combining a specially designed, 100% virgin rubber top cover and composite Agglorex latex foam substructure, this mattress system offers the latest in soft bed technology, with tensile strength that has been tested and proven. * Customized sizes on top-cover and latex foam available upon request.

- Established in 1925
- Made in Germany
- Exclusively new tire compound
- PAH and ISO 9000 certified
- Over 2.5 million stalls and counting

Here's how it works:



Top Cover - The full rubber top cover features a high-strength fabric, .16" / 4mm or .31" / 8mm thick, depending on the model, which is bolted to the concrete on both sides of the foam base. A slope in the rear area facilitates liquid drainage for surface dryness and easy cleanup.

Latex Foam Base - The foam base consists of 1.2" / 30mm thick composite foam sheets, creating perfect deflection. The compression resistance is designed for high punctual loads by dairy cows, keeping the shape of the base intact for many years.



Soft Bed 4/30 with top cover 4GS

To achieve the ultimate in cow comfort, health and production performance in your freestall, we recommend our 4GS system. It has the highest tensile cover available on the market and the best foam base cushion to optimize laying duration.

Elasticity/compression:

++ acc. to DLG report 6014F (>.83" / >21mm)

Top Cover Width: 6' / 180cm

Latex Underlay Width:

63" / 160cm

Thickness: 1.35" / 34.3mm

Length: Up to 328' / 100m

Soft Bed 8/30 with top cover 8GS

A tie stall management approach requires the 8GS comfort system. Our top cover surface is also doubling as a flooring surface for your cows. By increasing the thickness of the top cover, comfort and decking stability is achieved with perfect balance.

Elasticity/compression:

++ acc. to DLG report 5807F (1.06" / 26.8 mm)

Top Cover Width: 6' / 180cm

Latex Underlay Width:

63" / 160cm

Thickness: 1.5" / 38.1mm

Length: 32.8-229.7' / 10-70m



Proven tensile strength and more

Huber Technik products have been subjected to the rigorous Fokus Test by The German Agricultural Society (DLG), and earned the top ++ evaluations.



Seamless Installation

We can deliver our products in one piece up to a length of 328' / 100m. This means the floors are easy to install: Put down, roll out and fasten. No seams make it easier for daily stall maintenance.



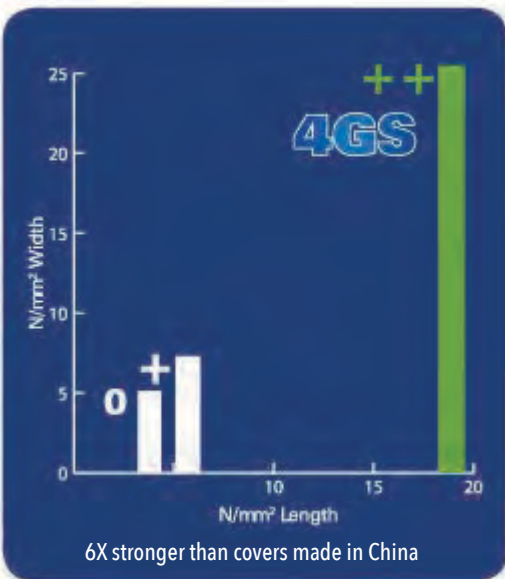
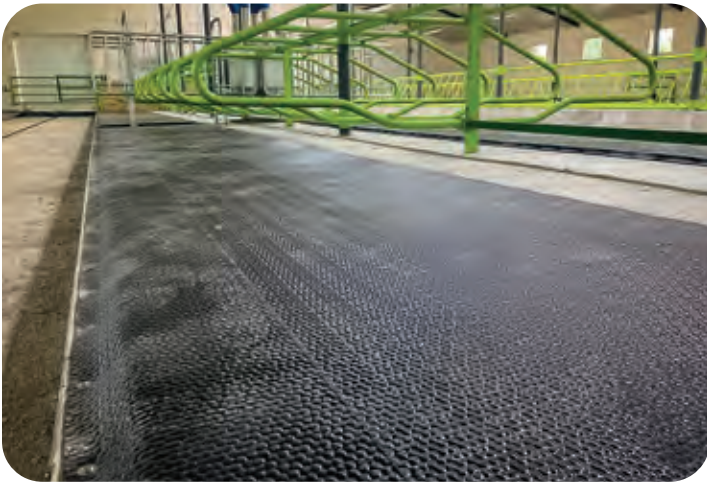
10-Year Warranty

Huber processes 100% new rubber, not scrap granules. We only process high-quality raw material, therefore, we are able to give a 10-year warranty on all of our products.



100% New Tire Compound

Our mats are exclusively made of new unvulcanized tire compound. They contain high-quality raw material that provide among other things aging-resistance and ozone protection.



TIP: Add Brisket board to aid stall indexing



NEW! 4' Poly Brisket Board

- Heavy-duty .25" / .64cm thick poly that won't crack, chip, or splinter
- 48" / 122cm lengths indented for proper anchor placement

This Brisket Board is a durable solution for any new or existing stall system. Its design is ideal for protecting dew claws and allowing your cattle to extend their legs in a natural manner. Due to the natural curve in the brisket, it is strong enough to support your cattle's weight.

Huber Technik Stalls & Rolled Alley Flooring

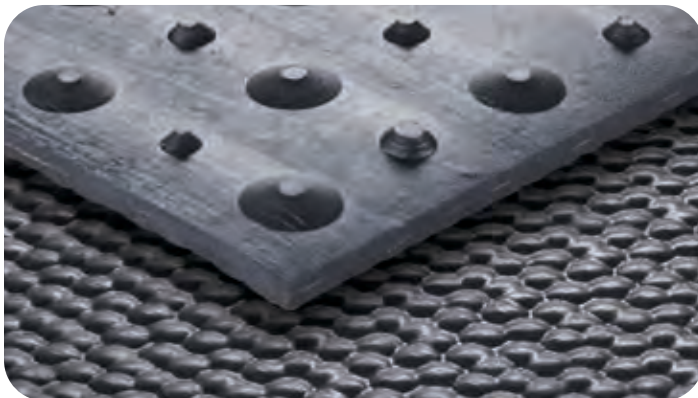
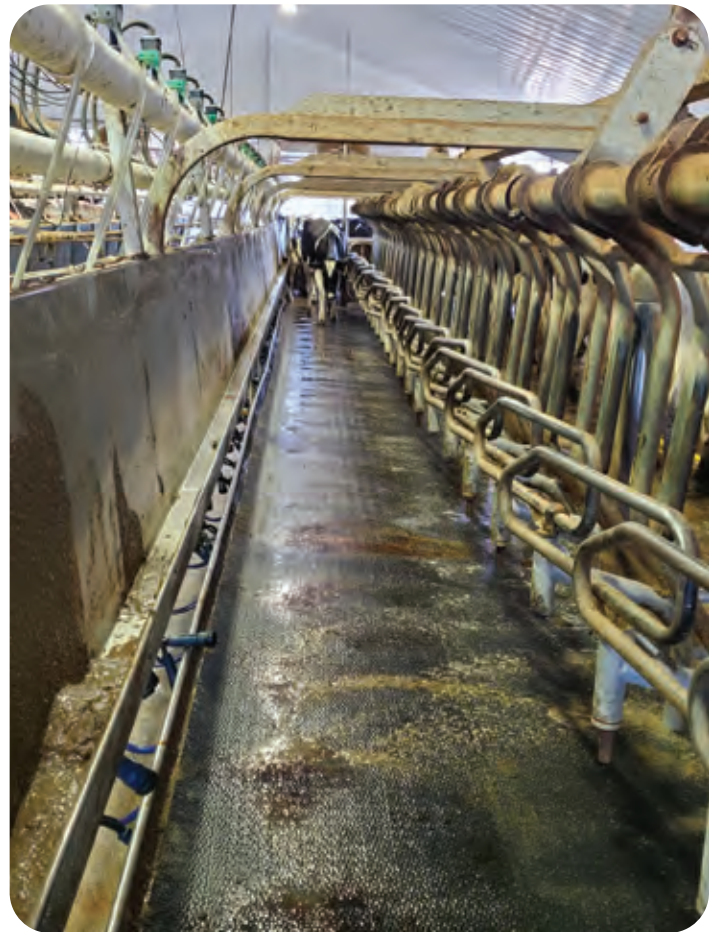


- Established in 1925
- Made in Germany
- Only new tire rubber compound
- PAH and ISO 9000 certified
- 10-15 Year Warranty

Cow comfort and profitability from the ground up!

At Agri-Comfort we will FLOOR YOU with our Huber Technik rolled rubber flooring. All of our continuous rolls can be cut to customized lengths to ensure minimal joints or seams in your stalls or floors. All our stall and flooring options are exceptionally flexible and provide a high level of slip-resistance. Coupled with 100% new tire compound, all rolls are fabric interlined for added strength.

The N15 walkway roll is an ideal parlor floor, the N18 walkway flooring is exemplary in alleys providing comfort and sure footing. Our N20 and N33 rolls provide even higher shock absorption for increased comfort in stall applications. The raised lugs act as shock absorbers and allow liquids to run freely underneath.



N-15 Rolls

Ideal for: Alleyways, Holding areas, Parlors

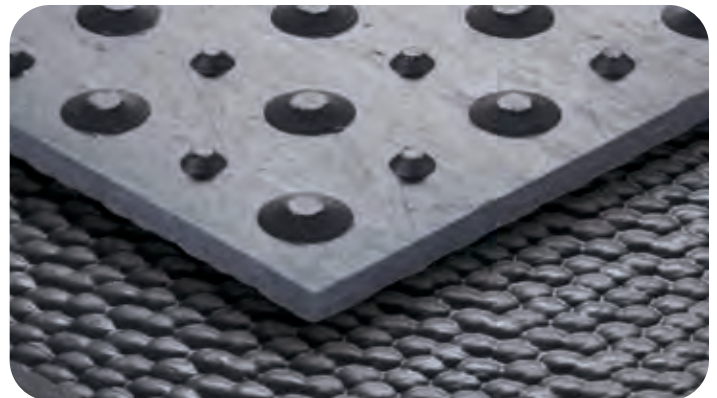
Thickness: .59" / 15mm

Width: 19.7-118.1" / 500mm-3000mm
in steps of 3.93" / 100mm

Length: 32.8-229.7' and 164' / 10-70m and 50m

Warranty: 10 years

Features: Smallest studded underside provides cushion and traction. Deflection/Penetration depth of .17" / 4.3mm



N-18 Rolls

Ideal for: Alleyways, Holding areas, Parlors

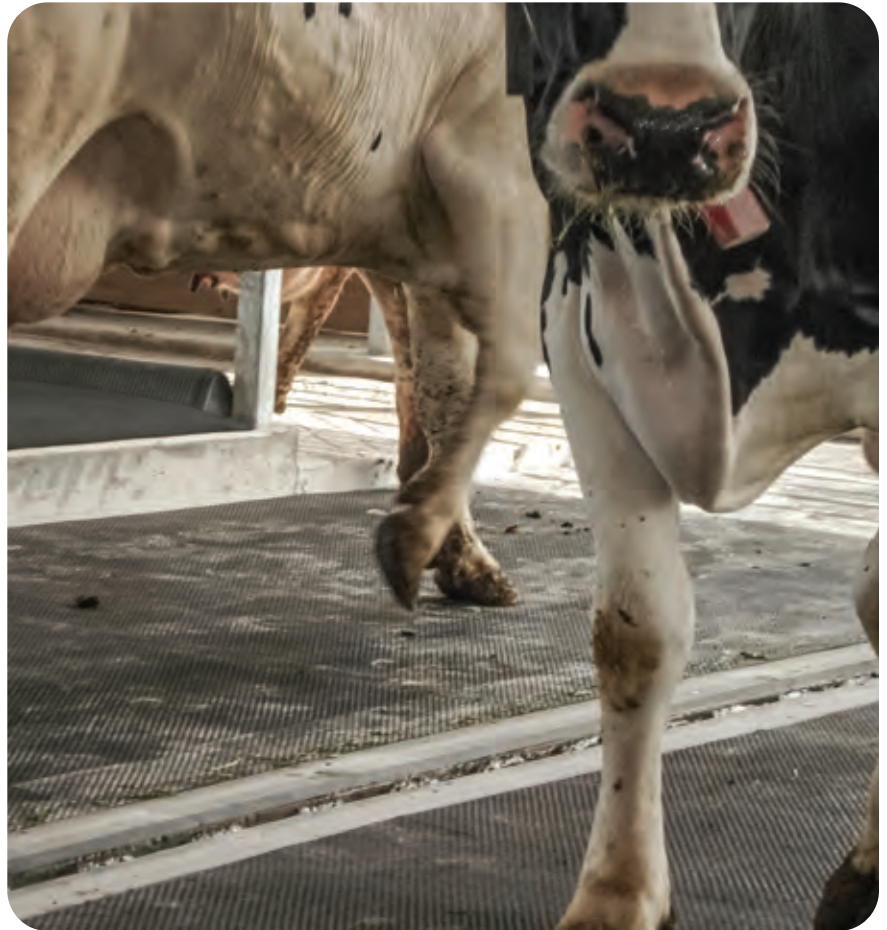
Thickness: .7" / 18mm

Width: 19.7-118.1" / 500mm-3000mm
in steps of 3.93" / 100mm

Length: 32.8-229.7' and 164' / 10-70m and 50m

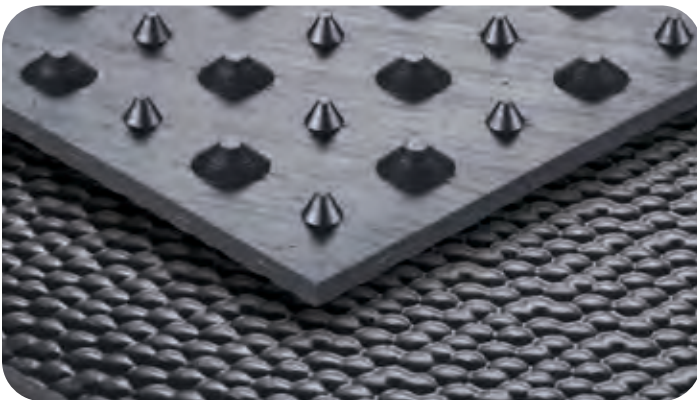
Warranty: 10 years

Features: Small studded underside provides cushion and traction. Deflection/Penetration depth of .03" / 10.7mm



Features of N-Series Stalls and Flooring:

- Virgin tire compound equals consistent quality
- Skid resistant pebbled surface
- Non-absorbent and urine resistant
- Precision-fit installation for minimal herd disruption
- Softness to emulate a pasture feel



N-20 Rolls

Ideal for: Free Stalls and Tie Stalls

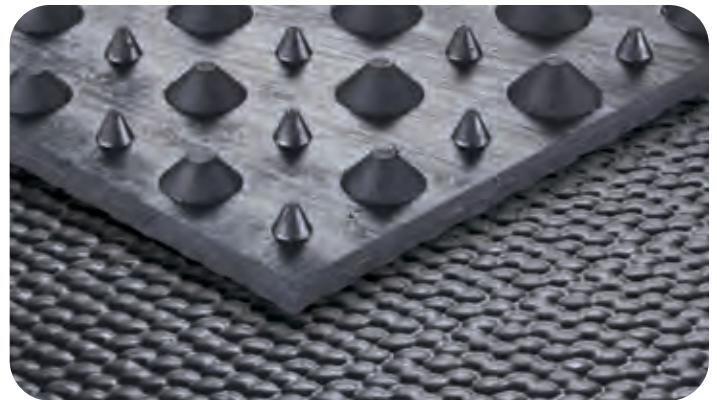
Thickness: .79" / 20mm

Width: 47.25-78.74" / 1200mm-2000mm

Length: 32.8-164' / 10-50m

Warranty: 10 years

Features: Medium studded underside provides cushion and traction. Deflection/Penetration depth of .03" / 10.7mm



N-33 Rolls

Ideal for: Free Stalls and Tie Stalls

Thickness: 1.3" / 33mm

Width: 74.8" / 1900mm

Length: 32.8-131.2' / 10-40m

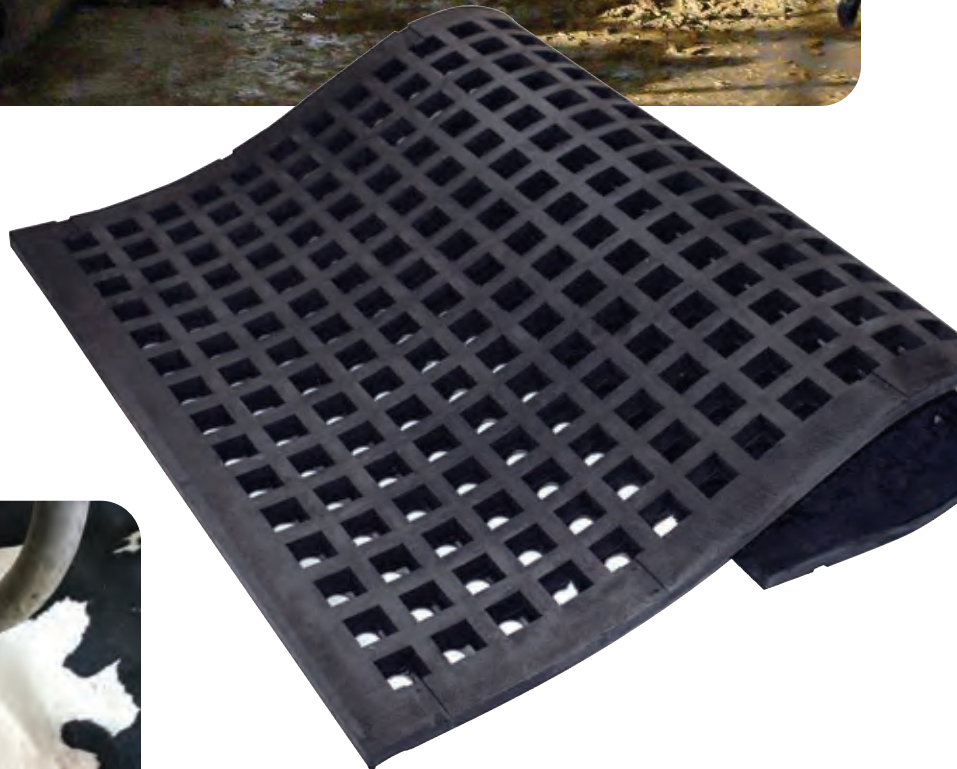
Warranty: 15 years

Features: Largest studded underside provides cushion and traction. Deflection/Penetration depth of .67" / 17mm

Agri-Grid Bedding Saver



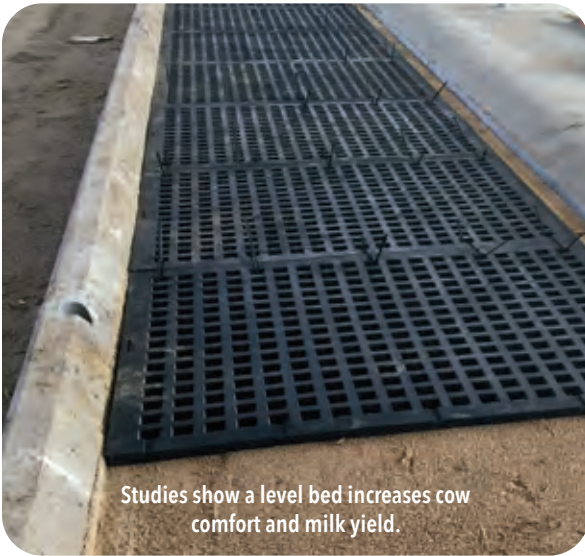
**Exclusive grid design
minimizes sand waste
and reduces digging**



Sand bedding moved to show
Agri-Grid Bedding Saver at work!

Get them to lay in it, not play in it!

Studies show that the environment in which a dairy herd lives has a direct correlation with the herd's health, comfort and milk production. Since the cows spend much of the day lying down and processing feed into milk, one of the most important factors is the bed that is used.



Studies show a level bed increases cow comfort and milk yield.

Features of Agri-Grid:

- Original and unique grid design
- Robust, comfortable and improves lying position
- Promotes accessibility and increases stall occupancy
- Reduces daily stall maintenance
- Supports hooves, keeps bed level and minimizes sand or compost waste
- Thickness: 1" / 25mm
- Dimensions: 4' x 5' / 1.219m x 1.52m

This innovative grid fits easily into freestalls to dramatically improve the performance and efficiency of your sand bedding efforts. Using the grid can reduce your sand usage by up to 50%!

With a solid base, there is less stall maintenance. Cows have less tendency to dig in the sand so the bed does not "belly out." Traditionally, a lot of labor is spent evening out the sand bed. With the Agri-Grid Bedding Saver Mat, the bed stays more level.



Reduce sand usage by up to 50%



Agri-Grid Bedding Saver Mats can be used in all types of deep-bedded free stalls.

"After years of using deep bed sand or sawdust for our cows we were tired of bedding literally going down the drain! We decided to install stall mats and went with the Agri-Grid Bedding Saver from Agri-Comfort. Best decision we could have made.

The cows continue to get the feel of deep bedding while remaining dry and happy and best of all, our bedding bill has been cut by close to 2/3 putting more money in our pocket!"

- Chris Van den Heuvel, Fireblade Holsteins Ltd.

Agri-Interlock Rubber Flooring Mats



Features of Interlock Mats:

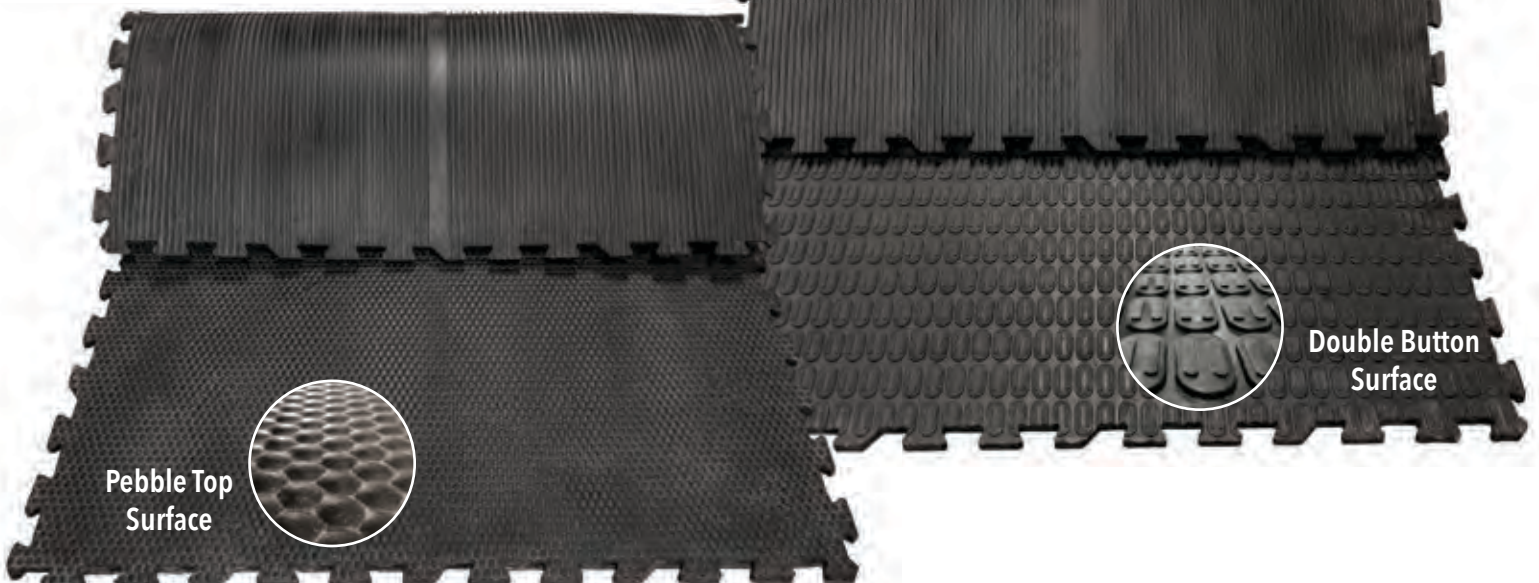
- Non-slip surface that provides excellent traction for your herd
- Resiliency for proper cushioning of feet and legs
- Durable for long and serviceable facility life
- Formulated quality to be robust and forgiving
- Unique Interlock configuration for installation versatility
- Highest quality UPCYCLED rubber

Provides traction and comfort even in irregular areas

Agri-Interlock is a high quality interlocking rubber floor mat. Agri-Interlock comes in one size - 70.8" x 47.5" and features custom interlock options - all four sides, two sides or a variety of custom cuts for your individual needs. These multi-purpose mats have a grooved underside that allow for drainage and add flex to absorb heavy foot concussion. The aggressive top pattern sustains traction and aids in slip resistance. For your herds safety and as a preventative in lameness related trauma, the Agri-Interlock is a logical addition to areas where rolled rubber is not manageable.



Grooved underside for drainage and flexibility



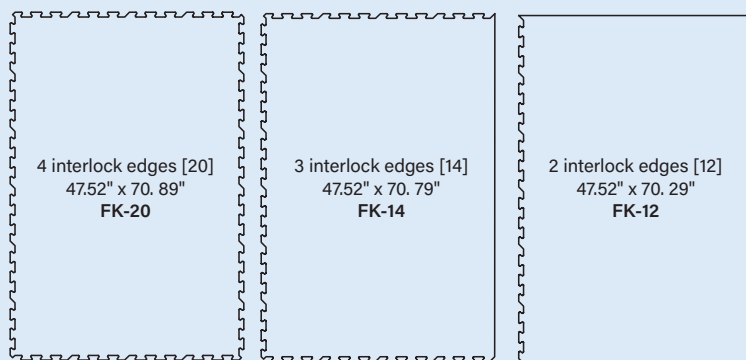
Pebble Top Surface

Double Button Surface



- A soft flooring surface is beneficial for hoof health.
- The proportion of cows becoming lame is greater for cows exposed to concrete than those on rubber.
- Cows on concrete have greater odds of developing or exacerbating heel erosion than cows on rubber flooring.

- Journal of Dairy Science, 2006



A variety of edges allow for greater flexibility when fitting irregular spaces. Custom cuts available upon request.

Specifications:

Width: 47.5" / 126.7cm **Lengths:** 70.29" - 70.89" / 178.5 - 180cm

Pebble Top Thickness: .625" / 16mm

Double Button Thickness: .875" / 22.2mm

DRI Slat Rubber Flooring



DRI Slat Mats Features:

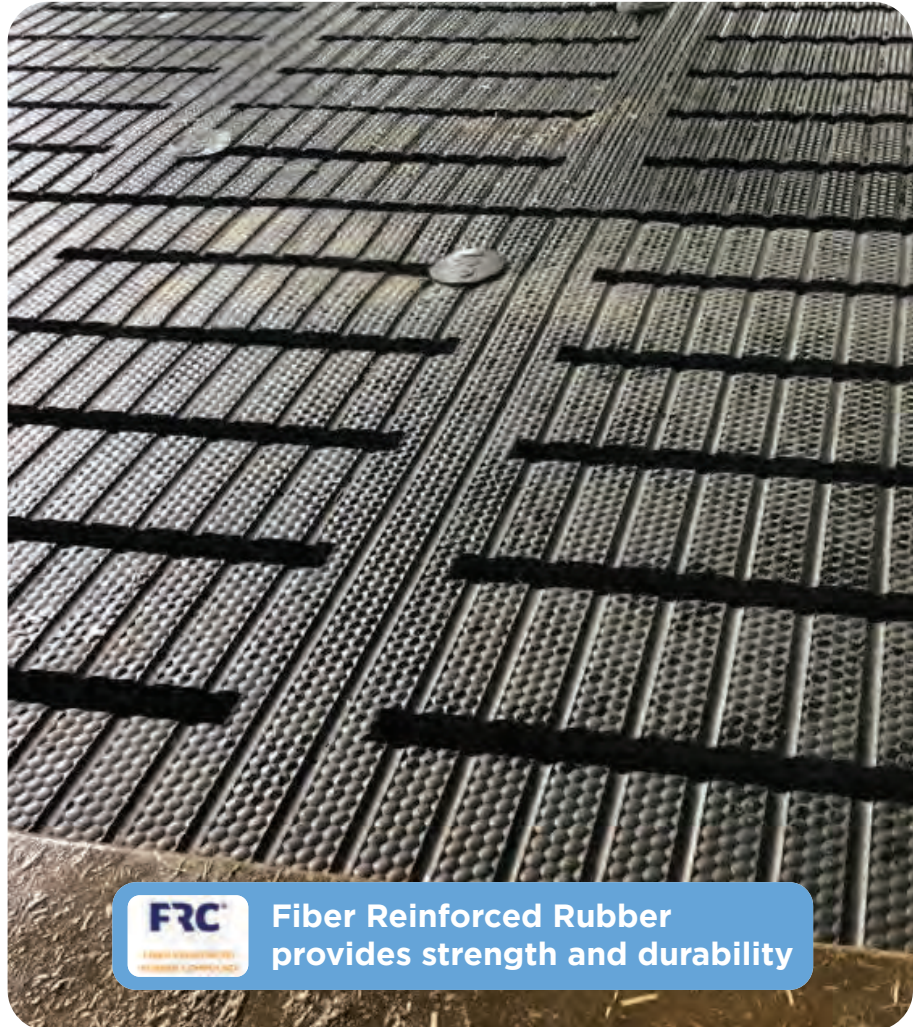
- Animal-friendly
- Developed for Beef and Dairy Cattle
- Reinforced: least deformation
- Slip resistant surface
- Patented All-Rubber Fastener System
- Full slat coverage: exact fit to concrete
- Easy installation
- Made from 100% UPCYCLED rubber
- 5-Year Limited Warranty

Specifications:

Dimensions: 4' / 1.2m L x 10-12' / 3-3.6m W

Thickness: .75" / 19mm

Weight: ±160-200 lbs / ±72.6-90.7kg



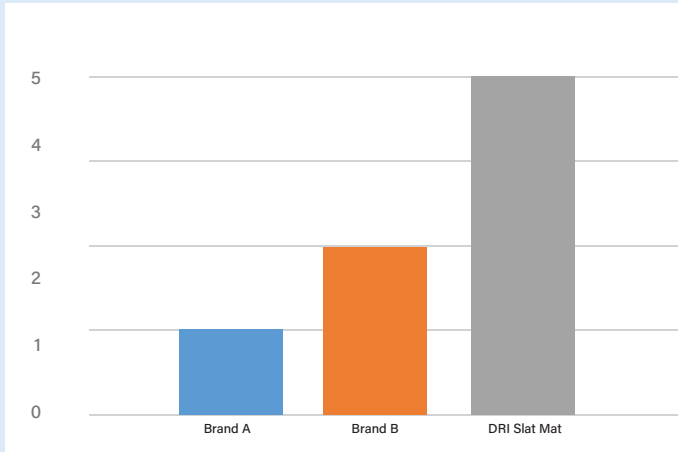
Advantages of DRI Slat Mats:

- Increased milk production
- Reduction of injuries • Improved heat detection
- Improved traction • Increased cow longevity

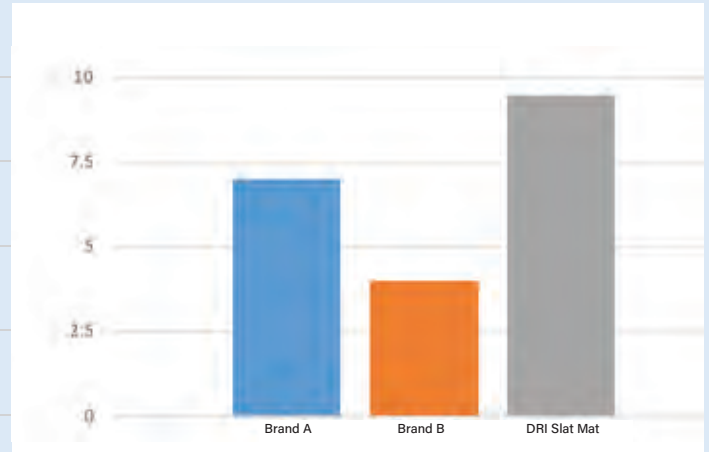
The DRI Slat Mat is developed taking into account the demanding circumstances under which it should perform, the function it serves for animal welfare, as well as the economic factor for the farmers. It is composed of upcycled rubber materials and is unmatched in strength by alternatives in the market today. The product improves yield for farmers and reduces the levels of nitrogen excreted by cattle, therefore directly reducing the farmers' environmental footprint.

Abrasion Resistance with Rotating Emery Cloth

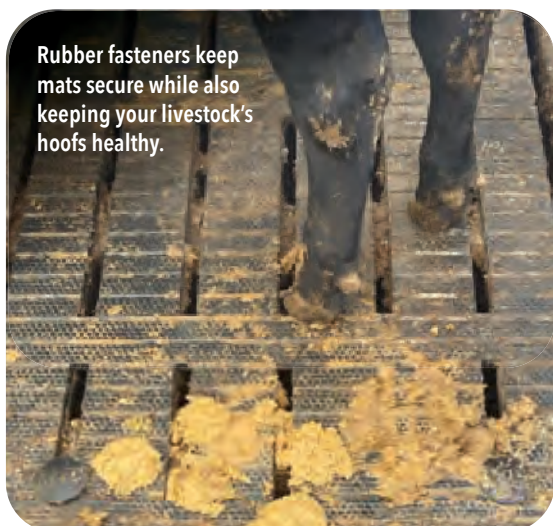
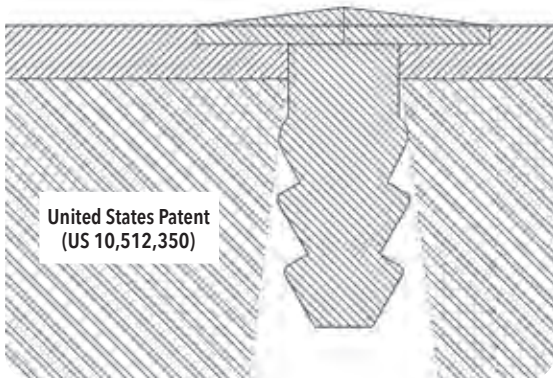
(Pressure of 500N for 10,000 times)



Productivity: Yield gain % vs. other systems



DRI Slat mat has over 2 times and 2.5 times the abrasion resistance of the next leading competitor. Research also demonstrates that DRI Slat Mat has a higher yield gain % compared to other brands.



Our DRI Slat Rubber Mats and its rubber properties prevent the highest amount of injuries. Other brands use plastic and steel in their fastener and can result in more injuries.

Our Slat Rubber Mats have the best rubber properties in the industry. It outperforms the existing brands leading to the highest yield in terms of average length of fattening, up to 9% faster. The other brands provide less comfort, reducing the farmers' environmental footprint.

Smart Manure Aeration Systems



Manure Management Specialists for Dairy, Beef & Hog

SMART MANURE AERATION SYSTEMS



Safer - Smarter



www.dairypower.com

SMART MANURE
 AERATION SYSTEMS

Main Benefits

The perfect solution for manure management in the Beef, Hog and Dairy industries

- Can be retro-fitted into any tank, regardless of size and structure:
 - Standard concrete storage
 - Under-slat storage
 - Round tanks
 - Lined lagoons
- Built to last :
 - Non-degrading uPVC pipework
 - Stainless steel casing and fixings
 - Highest-quality manufacturing
 - Systems in operation for over 25 years!
- Low-operating cost
- Fully automated system - set the digital control box to run the desired number of sequences for your manure and you never need to intervene again



*It's time saving, fuel saving with no agitation, you just drop the pump and go!
 The manure consistency and quality we get is big... out of everything we've done here
 with our new build, the Dairypower system is the product i'm most excited about...
 I'm 100% satisfied... it's a great system!*

- Dave Vandenbraak from Ontario, Canada



Smart Manure Aeration Systems



SMART MANURE AERATION SYSTEMS

Features:

CONVENIENCE

- Slurry, ready when you are...
- Never agitate your manure tank again!
- Hassle free – Take whatever you need... whenever!
- Homogenous pumpable state 365 days a year
- No blockages – completely consistent slurry

HEALTH & SAFETY / ENVIRONMENTAL

- Eliminates build-up of dangerous gases like hydrogen sulfide (H₂S)
- Better air quality
- Reduces methane and ammonia emissions
- No more diesel emissions or mechanical dangers from running tractors and agitators

**Safer for the farmer,
livestock and the
environment**

In 2016 we put up a new building to house 300 cows. It has 5 manure tanks, each one being 140 feet long. We're very happy with the Dairypower Manure Aeration System... you couldn't work without it in these size tanks.

I wouldn't go away from it for anything... there's no danger of gases and when you want to spread some manure all you need to do is back in the tanker and take some loads. It makes handling manure very economical and very safe.

– Nicholas Dollard from Ireland

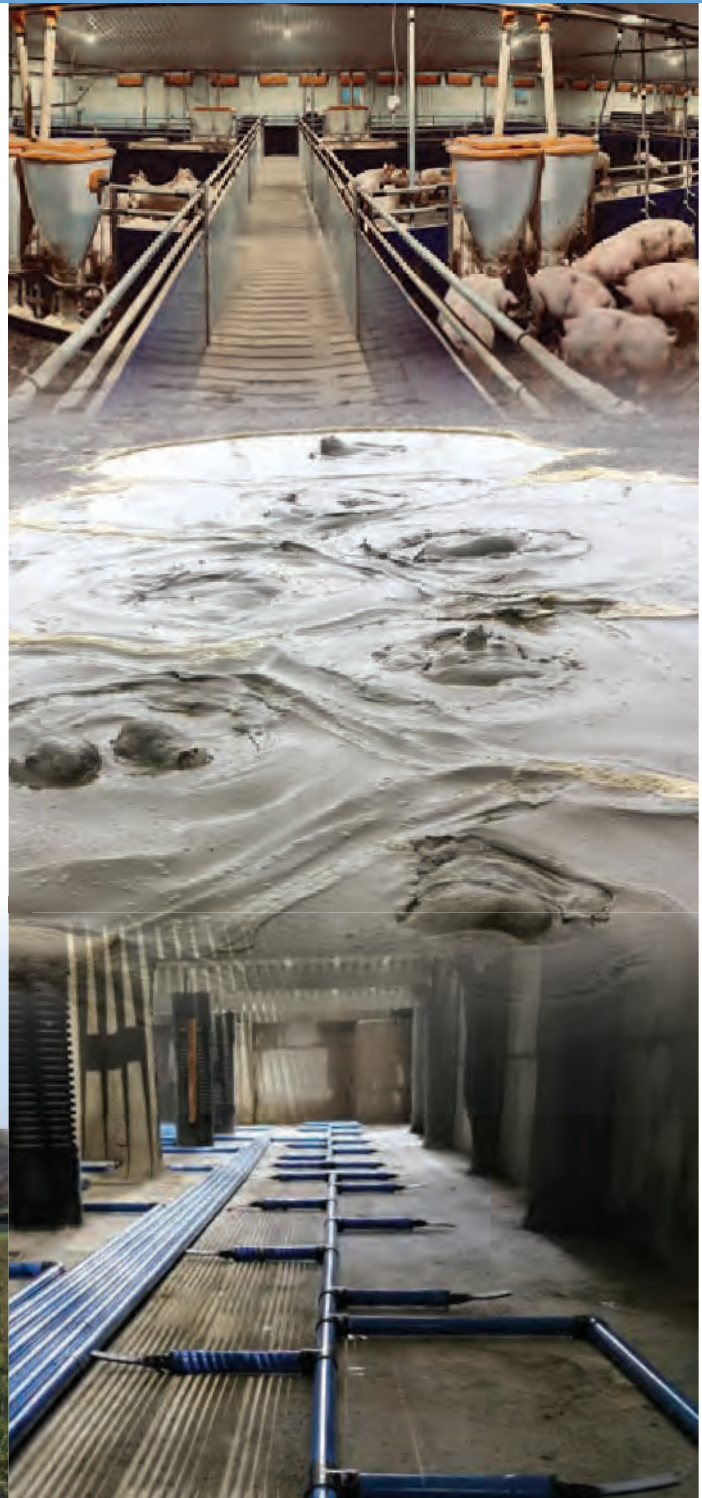
SMART MANURE
 AERATION SYSTEMS

Nutrient Improvement

- Increase Ammonia Nitrogen by 70%
- Increase Total Nitrogen and Potassium by 48%

Summary of Analyzed Nitrogen Values	Non-Aerated	Aerated
Total Nitrogen (% in Dry Matter)	2.7	4.0
Ammonia Nitrogen (% in Dry Matter)	1.4	2.4
Ammonia Nitrogen (% of Total Nitrogen)	51.7	59.4

- Consistent nutrients throughout the entire tank
- Reduce fertilizer and fuel costs
- Increased crop yields



*With the Dairypower Aeration System there's no more work in agitating manure!
 It's fantastic to have the option to take out two or three loads of manure at any time. It makes looking after our smaller paddocks an ease.
 My system was installed in 2007 and it has worked faultlessly...
 I wouldn't and couldn't be without it!*

- Mark Drohan from Ireland

